

Campaign Focus Area 18

The DuPont State Forest Area

The 10,400-acre DuPont State Forest sits at the heart of a nationally-significant natural heritage site. Here, the pristine Green and Little Rivers carve across a granite plateau, giving birth to four of North Carolina's most iconic waterfalls and several of the state's most unique assemblages of natural communities. These prized scenic, recreational, and ecological qualities transcend the state forest itself, traversing the Blue Ridge and crossing critical conservation land before mingling with the vast wilderness of the South Carolina upstate.



Photo: Ayers Christ

View from Bald Rock, Green River Preserve

A Wilderness Corridor Connecting the Carolinas

DuPont State Forest lies a mere 1.5 miles from South Carolina's Mountain Bridge Wilderness and the terminus of a 90-mile trail system that winds through nearly a million acres of contiguous protected forests. The swath of private, undeveloped land linking these public protected areas is the keystone to conserving the region's natural and recreational heritage. Through private conservation easements and public acquisition, Carolina Mountain Land Conservancy and partners are working to combat imminent development and create a buffer of protected land that permanently connects these Carolina natural treasures.

Building a Biological Bridge

The DuPont Forest area harbors a unique mosaic of low elevation granite outcroppings and mountain bogs—two of the rarest wildlife habitats in North Carolina. This extraordinary landscape is a refuge for federally threatened and endangered species including Mountain Sweet Pitcher Plants, Swamp Pinks, and Bog Turtles. Numerous populations of Green Salamander, a state-endangered species prioritized for conservation and extensive research by the North Carolina Wildlife Action Plan, thrive in the area.



Photo: CMLC

Mountain Sweet Pitcher Plant

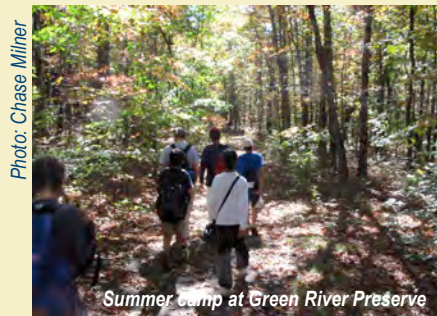


Photo: Chase Milner

Summer camp at Green River Preserve

Encouraging Education

The private lands surrounding DuPont State Forest are home to a myriad of summer camps and environmental education facilities, including the easement-protected, 2,600-acre Green River Preserve. The area has nurtured environmental awareness in thousands of young hearts and minds, and expanding the preserved landscape beyond existing public lands will sustain both tomorrow's conservation land and tomorrow's conservationists.

Fostering an Economic Future

DuPont draws more visitors than any other North Carolina state forest. As well as exploring the forest's stunning waterfalls, abundant trails, and rich trout waters, visitors support the region's hospitality industry and purchase goods from local artists, farmers, and other retailers. With traditional industries transitioning to tourism-related revenue sources, linking DuPont State Forest to public land in South Carolina will amplify the economic benefit of land conservation.



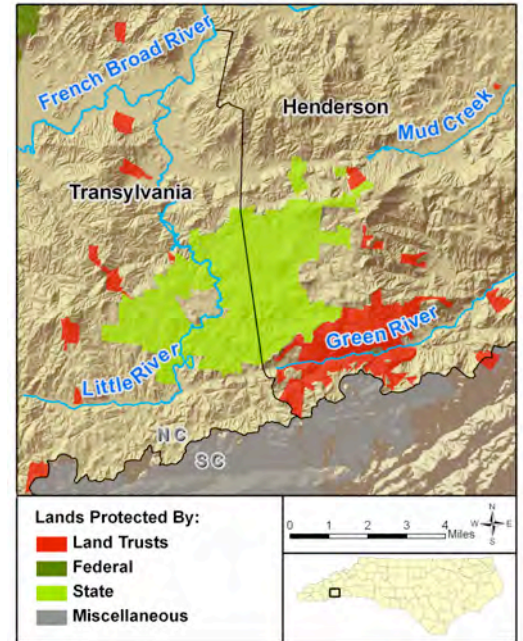
Photo: Friends of DuPont Forest

Mountain biking in DuPont Forest

DuPont State Forest Area

For over a decade, Carolina Mountain Land Conservancy (CMLC), The Conservation Fund, The Nature Conservancy, and the North Carolina Division of Forest Resources have worked in collaboration to protect more than 14,500 acres of DuPont State Forest and surrounding private lands. In 1997, CMLC helped facilitate the sale by the DuPont Corporation of an initial 7,600 acres to the Conservation Fund, which transferred the property to the State for the establishment of the new state forest. A subsequent purchase by the State in 2001 brought the total expanse of state land to its present 10,400 acres.

Since 2006, CMLC has used \$3.5 million of private funds to leverage \$7 million of public funds and over \$11.3 million of donated interests in land to total more than \$21.8 million of land value conserved in the DuPont region. These projects, consisting mostly of donations and bargain sales of conservation easements, have protected 3,500 acres that buffer and enhance public land, and have begun to create a large-scale wildlife corridor linking to protected areas in South Carolina. Each project is strategically targeted, using the North Carolina Wildlife Action Plan and other data sources to set priorities for land conservation.



Leave Your Legacy

Another 2,000 acres of this landscape, with a conservation value of approximately \$12.5 million, is at immediate risk and targeted for protection by 2010. There are few ways that you can leave a more lasting, tangible legacy than through land conservation. Please consider a tax-deductible gift to help preserve this vital wilderness corridor. Each donation brings us closer, acre by acre, to securing the integrity of this magnificent wilderness for present and future generations.

Financial information about this organization and a copy of its license are available from the State Solicitation Licensing Branch at 888-830-4989. The license is not an endorsement by the state.

Goal: 3,000 Additional Acres by 2010			
Funding Source	Protected 2006-2007 3,500 Acres	To Protect 2008-2010 2,000 Acres	TOTAL 5,500 Acres
Private Donations	\$3,500,000	\$2,000,000	\$5,500,000
Public Funding	\$7,000,000	\$4,000,000	\$11,000,000
Land Value Donations	\$18,000,000	\$6,500,000	\$24,500,000
TOTAL	\$28,500,000	\$12,500,000	\$41,000,000



Carolina Mountain Land Conservancy – Kieran Roe, Executive Director
P.O. Box 2822, Hendersonville, NC 28793
(828) 697-5777
www.carolinamountain.org

Carolina Mountain Land Conservancy (CMLC) envisions a region in western North Carolina where, in the face of continued rapid growth and development over coming decades, sufficient farm, forest, park, natural land and water resources will be conserved to safeguard the region's unique natural heritage and quality of life for future generations. As an effective local nonprofit organization dedicated to saving the places you love, CMLC is helping to create a regional network of more than 17,700 acres in Henderson, Transylvania and neighboring parts of Buncombe, Jackson and Rutherford counties in western North Carolina.



Blue Ridge Forever, 34 Wall Street, Suite 802A, Asheville, NC 28801
Phyllis Stiles, Campaign Director Telephone: 828-253-0095 x 212
Website: www.blueridgeforever.info