

## Campaign Focus Area 27

# Pond Mountain

Pond Mountain, perched in the northwest corner of North Carolina, overlooks the Virginia, Tennessee and North Carolina mountains. At over 5000 feet in elevation, Pond Mountain provides uniquely stunning vistas, eclipsed only by a diversity of flora, fauna, and precious conservation opportunities. Pond Mountain creates an anchor for the future protection of thousands of additional acres in the northwestern corner of the state.



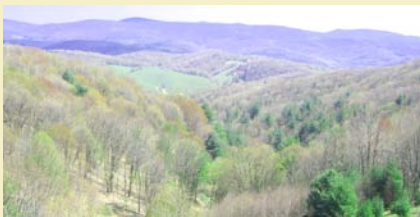
Photo: Walter Clark

## Magnificent Views and Water Quality Prime for Development

Pond Mountain was surveyed in 1746 and 1749 and named by Peter Jefferson, father of Thomas Jefferson. Named for the many natural ponds that once dotted this high-altitude ridgeline, Pond Mountain has a long history as an important water resource. These resources, coupled with magnificent views, make Pond Mountain a prime target for development. Efforts to preserve this beautiful part of our state are ongoing.

### Biological Diversity

Pond Mountain has outstanding water resources. The North Carolina Wildlife Resources Commission staff has determined that the waters of Pond Mountain support or protect significant brook trout resources. Pond Mountain is the headwaters of Big Horse Creek and Big Laurel Creek - both of which feed into the north fork of the New River. With the tract's proximity to Cherokee National Forest to the west and Jefferson National Forest to the north, Pond Mountain can link large tracts creating outstanding opportunities for wildlife habitat.



### Cultural Heritage

The Pond Mountain community has deep roots in agriculture. The relatively recent advent of the Christmas tree economy has left its mark on Pond Mountain. Approximately 600 acres of the mountain's 1,800 acres are in Christmas tree production. The ecological restoration of this site, through management by the NC Wildlife Resources Commission, can guide the agricultural practices of other commercial Christmas tree operations who wish to move toward habitat enhancement and restoration.

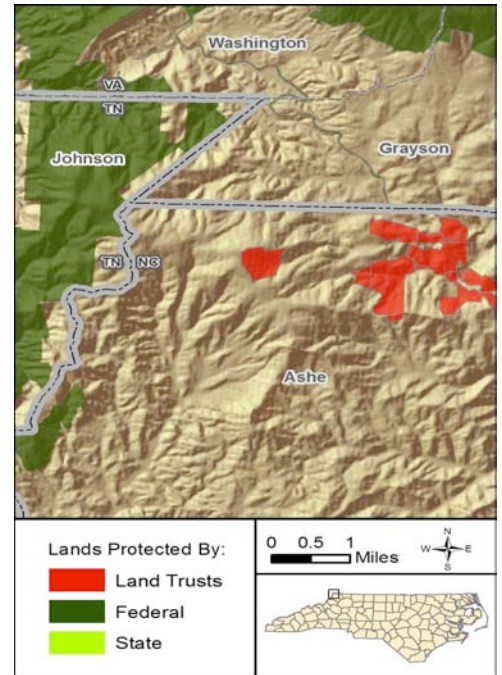
### Economic Significance

Decades of Christmas tree farming on Pond Mountain have contributed millions of dollars to the economic base of Ashe County and North Carolina. With the protection of Pond Mountain, dollars will continue to support the economy through hunting, horseback riding, bird watching, fishing, and cycling. The opportunity to hike or ride for hours and days without crossing a public road is truly unique.



# Pond Mountain

From the start, the protection of Pond Mountain has been a collaborative effort of public, private, and non-profit groups and organizations. A generous private donation, combined with public support from the Clean Water Management Trust Fund and the Natural Heritage Trust Fund all have been instrumental in securing the financial resources for this \$14 Million project. Blue Ridge Rural Land Trust partnered with the North Carolina Wildlife Resources Commission, High Country Conservancy and the National Committee for the New River to turn an idea into reality. The next challenge is to build on the success of Pond Mountain and to protect as many acres as possible in the northwest corner of North Carolina. Adjacent and neighboring properties remain unprotected. Donations in support of Pond Mountain will be applied directly to the mountain's protection and to the protection of surrounding properties. The protection of the Pond Mountain area is a priority for the State Wildlife Action Plan (SWAP), a comprehensive plan developed by the N.C. Wildlife Resources Commission and many partners to help conserve the state's wildlife and wildlife habitat.



## Leave Your Legacy

There are few ways that you can leave a greater legacy than through land conservation. Please consider a gift to preserve the magnificent landscape of Pond Mountain. Each donation brings us one step closer to conserving this natural treasure for our great-grandchildren and beyond. We welcome your gift and thank you for caring about North Carolina's valuable and fragile mountain landscape. Please call Blue Ridge Rural Land Trust at the number below to discuss your tax-deductible gift.

*Financial information about this organization and a copy of its license are available from the State Solicitation Licensing Branch at 888-830-4989. The license is not an endorsement by the state.*

| Goal: 3,800 Additional Acres by 2010 |                                    |                                     |                      |
|--------------------------------------|------------------------------------|-------------------------------------|----------------------|
| Funding Source                       | Protected 2006-2007<br>1,800 Acres | To Protect 2008-2010<br>2,000 Acres | TOTAL<br>3,800 Acres |
| Private Donations                    | \$1,500,000                        | \$2,000,000                         | \$3,500,000          |
| Public Funding                       | \$6,500,000                        | \$6,000,000                         | \$12,500,000         |
| Land Value Donations                 | \$6,000,000                        | \$12,000,000                        | \$18,000,000         |
| <b>TOTAL</b>                         | <b>\$14,000,000</b>                | <b>\$20,000,000</b>                 | <b>\$34,000,000</b>  |



**Blue Ridge Rural Land Trust, PO Box 669, West Jefferson, NC 29694**  
**James Coman, III, Director Emeritus, Walter Clark, Executive Director**  
**Telephone: 336-846-2758 Website: [www.brllt.org](http://www.brllt.org)**

Blue Ridge Rural Land Trust is concerned about the landscape you experience every day - the pasture you see from your kitchen window, the wooded area you pass on your way to work, the neighbor's old house and barn that blend into the agricultural landscape. Although we recognize the importance of preserving undisturbed land, we are dedicated to maintaining and preserving working lands- agricultural lands that support farmers and others who depend on the land for livelihoods. Since our founding in 1997, Blue Ridge Rural Land Trust has made significant progress in land protection, (protecting 10,000 acres by early 2008.) BRRLT is a low-profile organization by design, working mostly with landowners who seek our services. Please contact us if you would like to know more about how we can help you preserve our rural landscape, natural beauty, cultural heritage and agricultural economy please contact us.



**Blue Ridge Forever, 34 Wall Street, Suite 802A, Asheville, NC 28801**  
**Phyllis Stiles, Campaign Director Telephone: 828-253-0095 x 212**  
**Website: [www.blueridgeforever.info](http://www.blueridgeforever.info)**